



MONTHLY MEMBERSHIP PROGRESS REPORT

District 11 B2

Results as of: 12/31/2017

GMT: STEVE ANTON

LOCATION MICHIGAN

GMT CA

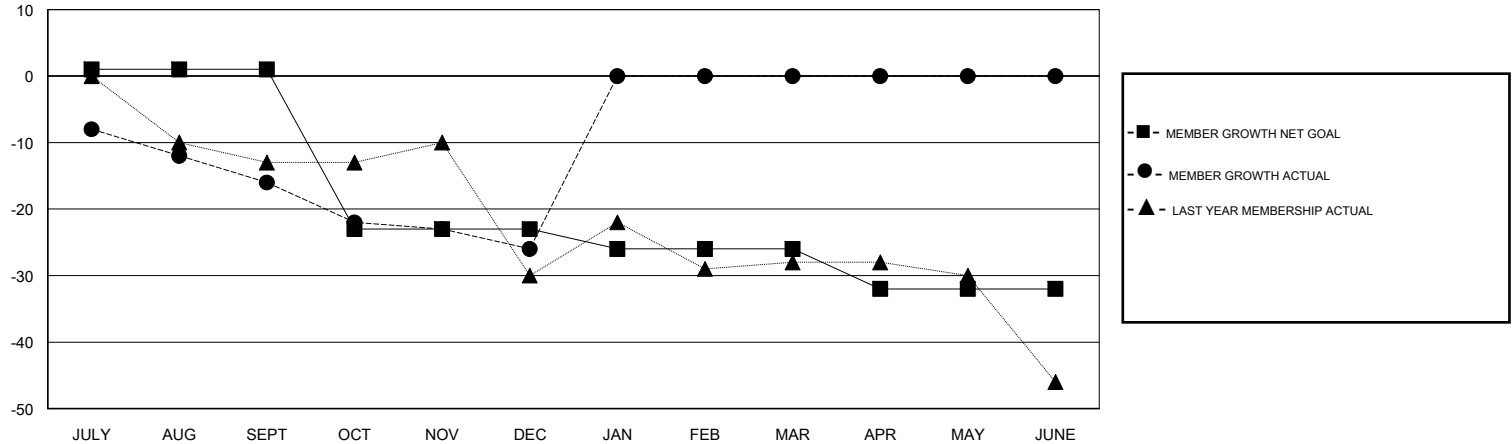
| Clubs | | | |
|-----------------------|---------------|-----------|---------------|
| RESULTS FOR 2017-2018 | | | |
| QUARTER | NEW CLUB GOAL | NEW CLUBS | DROPPED CLUBS |
| JULY/AUG/SEPT | 0 | 0 | 0 |
| OCT/NOV/DEC | 0 | 0 | 0 |
| JAN/FEB/MAR | 0 | 0 | 0 |
| APR/MAY/JUNE | 0 | 0 | 0 |

| Members | | | |
|-----------------------|------------------------|----------------------|--|
| RESULTS FOR 2017-2018 | | | |
| QUARTER | MEMBER GROWTH NET GOAL | MEMBER GROWTH ACTUAL | DROPPED MEMBERS ACTUAL (including transfers) |
| JULY/AUG/SEPT | 1 | 12 | 26 |
| OCT/NOV/DEC | -24 | 22 | 30 |
| JAN/FEB/MAR | -3 | 0 | 0 |
| APR/MAY/JUNE | -6 | 0 | 0 |

GOALS AND ACTUAL NEW CLUBS CUMULATIVE



GOALS AND ACTUAL MEMBERS CUMULATIVE



| | | |
|--|---|--|
| DROPPED CLUBS: 0 | 15 CLUBS OF 37 ADDED 1 OR MORE NEW MEMBERS | <u>GENDER DISTRIBUTION</u> MALE 670 (69.21%) FEMALE 298 (30.79%) Women Percentage Fiscal Year Goal: 30% |
| <u>DROPPED MEMBERS</u> DECEASED 7 CLUB CANCELLED 0 OTHER 49 TOTAL 56 | CLICK HERE FOR CUMULATIVE MEMBERSHIP DATA | TOTAL FAMILY UNIT MEMBERS 224 FAMILY MEMBERS PAYING HALF DUES 113 |